


# Welcome to Westmount Collegiate Institute



# STUDENT AND PARENT SUPPORTS

- ▶ Principal: Ms. Ann Pace
  - ▶ Vice Principal: Ms. Lana Fisher (A to L)
  - ▶ Vice Principal: Mr. Todd Taylor (M to Z)
  - ▶ Head of Guidance: Ms. Natasha Popiel
  - ▶ Guidance Counsellors: Ms. Cynthia Jackson, Mr. David Pressman
  - ▶ Head of Special Education: Mr. Zachary Salsberg
  - ▶ Literacy Teacher: Mr. Ryan Gorewicz
  - ▶ Student Success Teacher: Ms. Stephanie Rosenberg
  - ▶ Child and Youth Worker: Ms. Stephanie-Le Tran
  - ▶ School Social Worker: Mrs. Marnie Teitelbaum
- 

# COMMUNICATION

- ▶ Call the school directly 905-882-0277 or email [westmount.ci@yrdsb.ca](mailto:westmount.ci@yrdsb.ca)
- ▶ The Board ([www.yrdsb.ca](http://www.yrdsb.ca)) and School websites (<http://westmount.ci.yrdsb.ca/>) are used to provide general information to our community as well as some specific school information
- ▶ The School Twitter feed @ is used to post specific school announcements as well as distribute information that may be of interest to the community through retweets
- ▶ Teachassist <https://ta.yrdsb.ca> is the platform used to provide parents with on-going tracking of student achievement as well as easy access to emailing teachers with questions or concerns
- ▶ iNFORM daily communication regarding absences

# IMPORTANT DATES:

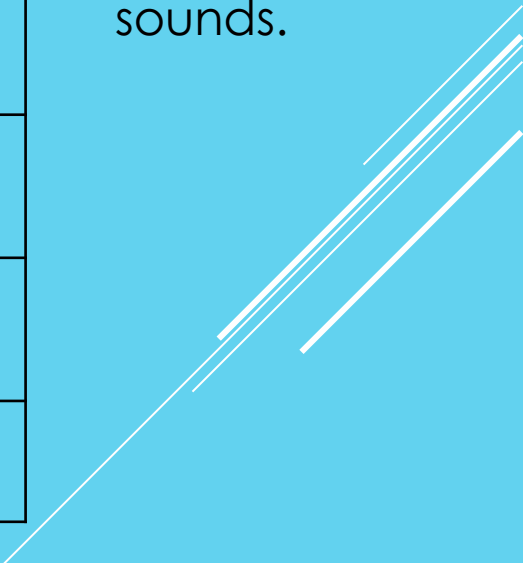
## FIRST SEMESTER HIGHLIGHTS

- ▶ Sept. 22: School Council 7pm Virtual Meeting
- ▶ Oct. 22: Distribution of Interim Reports
- ▶ Oct. 27: Parent Interviews 6 – 8 pm
- ▶ Nov. 3: TOKTW Day (tentative)
- ▶ Nov 11: Term 2 Starts (important to Civics/Careers students)
- ▶ Nov. 17 : Midterm Reports (sent to students' GAPPS account)
- ▶ Nov. 19: Professional Activity Day
- ▶ Dec. 20 - 31: Winter Holidays
- ▶ Exams: January 25 - 31 (TBD)


# THE SCHOOL DAY

<b>Approximate bus arrival time:</b>	8:25 a.m.
<b>Homeroom (attached to Block 1)</b>	8:40 a.m. - 8:45 a.m.
<b>Block One (150 min)</b>	8:45 a.m. - 11:15 a.m.
<b>Travel time (5 min)</b>	11:15 a.m. - 11:20 a.m.
<b>Lunch (50 min)</b>	11:20 a.m. - 12:10 p.m.
<b>Travel time (5 min)</b>	12:10 p.m. - 12:15 p.m.
<b>Block Two (150 min)</b>	12:15 p.m. - 2:45 p.m.
<b>Approximate bus departure time:</b>	3:00 p.m.

On Time  
means that  
students are in  
class, ready to  
work before  
the bell  
sounds.



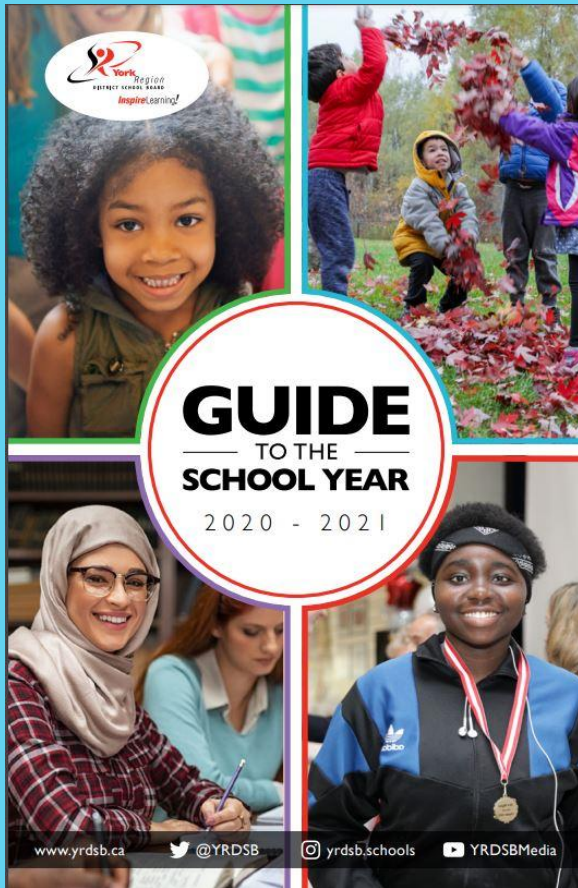
# PARKING LOT SAFETY

- ▶ Ideally students are to be dropped off and picked up in the far west parking lot
  - ▶ Drivers entering the school parking lots from any entrance must proceed slowly and with the utmost caution
  - ▶ Students who ride their bicycle to school need to be aware of vehicles in the parking and driveway areas
  - ▶ Students using skateboards as transportation to school must also be aware of traffic in the parking and driveway areas
  - ▶ Skateboards are not to be used indoors or near any school access point
- 

# HEALTH AND SAFETY

- ▶ Students may leave the property at lunch and are encouraged to go home for lunch.
- ▶ Those who remain at school may eat in the cafeteria or outside.
- ▶ The school cafeteria does not provide food services at this time.
- ▶ Students are not required to sign out nor do they need parental permission to leave at lunch.
- ▶ In the school food and beverages are expected to be consumed in designated areas.
- ▶ Keep the school office updated with health concerns that impact your child on an ongoing basis (allergies, diabetes, seizures, etc.). The school email account [westmount.ci@yrdsb.ca](mailto:westmount.ci@yrdsb.ca)

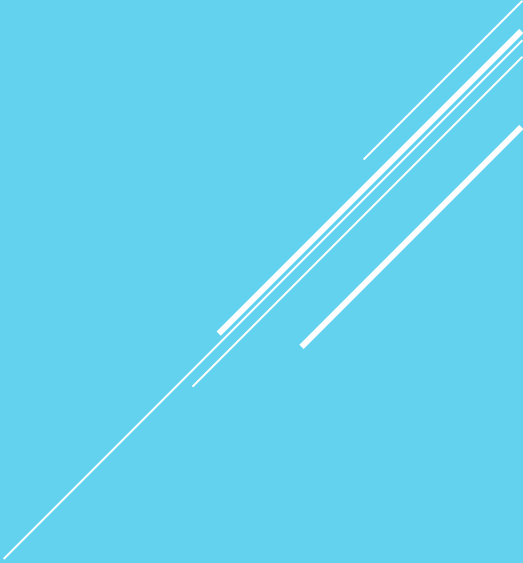
# SCHOOL POLICIES AND EXPECTATIONS



- ▶ Homeroom teachers will review the information about School and Board policies found in the School Start Up Package, and the Guide to the School Year (posted on our school webpage)
- ▶ Administration will reinforce key policies at a student virtual assembly
- ▶ Students are responsible for being aware of these policies and following them
- ▶ Students and parents are asked to sign documentation indicating they understand and will abide by the expectations and rules



# Appropriate attire shows respect for self & others

- includes all clothing, accessories, backpacks
  - respectful language & graphics – no references to drugs, alcohol, smoking, sex, racism, sexism
  - outer tops must meet outer bottoms
- 
- A series of white lines of varying lengths and orientations are positioned in the bottom right corner of the slide, creating a modern, abstract graphic element.

# INTEGRATED TECHNOLOGY USE

- ▶ Students are encouraged to bring their technology to school to use in class.
- ▶ Lockers are available for students to secure their technology and other valuables during physical education classes or extra-curricular activities.
- ▶ Primary devices include tablets, chromebooks, and laptops
- ▶ Use of personal electronic devices such as smart phones and iPods should be limited to time outside of instructional time unless the teacher has authorized their use.
- ▶ No videos/photos of students or staff may be taken unless part of course curriculum and teacher supervised .

QUESTIONS?

